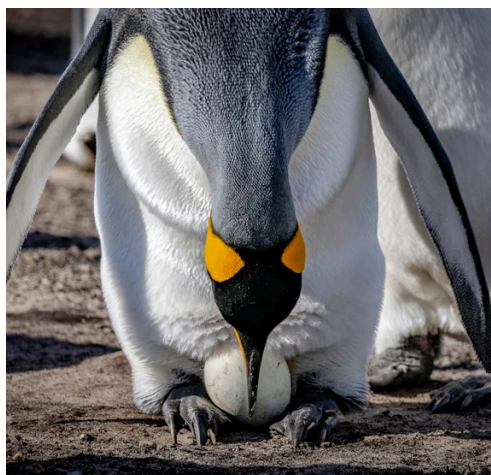




# Small Group Tours by **EMBARK**

22 NIGHT HOSTED TOUR  
COMMENCE SANTIAGO ON THE 26 FEBRUARY 2028  
CONCLUDE SANTIAGO ON THE 20 MARCH 2028

## IN-DEPTH ANTARCTICA





# Let's explore Antarctica together in 2028

Far beyond the horizon lies **Antarctica** — a vast realm of glaciers, ice fields, and soaring white peaks. On your Antarctica cruise with Embark and HX, you'll spend 21 nights at sea. Discover a place where penguins roam undisturbed and whales carve through subzero waters. As part of your epic journey, explore the wildlife-rich shores of the **Falklands and South Georgia** — destinations as unforgettable as **the Seventh Continent** itself.

Setting foot on this remote continent is a dream for many, but an experience for few. For an expedition this bold, you need true pioneers by your side. Since 1896, HX has led intrepid explorers on Antarctica expeditions that go beyond expectations and enrich your understanding of our world.

We'll sail from Chile to explore the Falkland Islands and South Georgia, both important Bird Areas teeming with wildlife. Falklands offers windswept beauty, while South Georgia features alpine landscapes, penguin colonies, fur seals and abandoned whaling stations. Your Expedition Team will assess and adapt to the local weather conditions and ensure you have a truly unforgettable adventure. Next up is incomparable Antarctica, the Seventh Continent. Every day that we explore the Antarctica Peninsular, our route and landings are guided by nature. Come February and March, more whales visit the polar region and penguin chicks start to molt down their feathers!

Purpose-built as an expedition cruise ship, MS Fram is an exceptional base camp for explorers. On board, comfort is a top priority, so after a day of exploration you can relax in a hot tub, dine in your choice of two restaurants or at the outdoor BBQ and catch up with your fellow guests with a cocktail in hand as you watch the scenery glide past in the Explorer Lounge & Bar. In the Science Centre, at the heart of the ship, you'll discover more about the places you sail to and listen to talks by the Expedition Team. With key expedition features and technology, MS Fram is primed to bring you on a journey of discovery to our planet's most alluring and unspoiled regions.

## Inclusions That Set Us Apart

We believe in offering a seamless, stress-free adventure. Here's what's included above and beyond the HX package:

- Hosted by owner Michelle Barker
- Pre-Tour Get Together with your Travelling Companions in Newcastle
- Embark Beanie and Fleece
- Bonus Group Dinner onboard at specialty restaurant, Lindstrom
- Group Dinner in Santiago on the 26<sup>th</sup> February

This isn't just a tour—it's a life-changing experience. Will this be your Seventh Continent?!?



## LETS TALK ABOUT THE FALKLAND ISLANDS AND SOUTH GEORGIA

Not all Antarctica Cruises include the Falkland Islands and South Georgia. This feels like a once-in-a-lifetime opportunity to visit this part of the world, so we felt it was important to experience as much as possible!

### The Falkland Islands

Penguins are the undisputed stars of the Falklands. Five species make their home here, from the charismatic rockhopper with its wild yellow eyebrows to the elegant king penguin, standing tall in shimmering silver and gold. You'll find them waddling along white-sand beaches, nesting in grassy burrows, or diving headfirst into the surf. The islands' isolation and rich marine life make them a haven for these seabirds – offering some of the best penguin encounters anywhere on Earth. Whether it's a curious chick or a bustling colony, each moment with them is pure magic.

The Falklands are a birdwatcher's dream – home to over 200 species, with a handful found nowhere else. The skies, cliffs, and grassy hills are alive with the sound of squawks. Coastal wetlands attract waders and waterfowl, while inland, you'll spot upland geese, meadowlarks, and the striking Falkland thrush.

With so few predators and vast open landscapes, the islands offer rare encounters with birdlife, including nesting black-browed albatross. Our experienced ornithologists will help you identify rare species, share insights into behaviour and migration, and reveal how this ecosystem supports such extraordinary diversity.

Along the rugged coastlines of the Falklands, you'll encounter some of the Southern Ocean's most boisterous marine mammals. Southern sea lions dominate rocky outcrops, their powerful bodies and loud barks unmistakable as they jostle for space and attention. On more sheltered beaches, southern elephant seals – the world's largest seal – haul out to rest, molt, and spar in dramatic displays. Smaller fur seals can be seen lounging on kelp-strewn shores or swimming just offshore. The islands' pristine waters and minimal human disturbance make them an ideal spot for observing these creatures in their natural habitat.

The waters surrounding the Falklands are a prime spot for whale watching. Humpbacks are among the most spectacular visitors – breaching, tail-slapping, and feeding in the rich waters offshore. Sei whales, fin whales, and even orcas can also be spotted.

Closer to the coast, you might glimpse Peale's dolphins or the distinctive black-and-white Commerson's dolphin darting through the surf. With our onboard marine biologists, you'll gain a deeper understanding of these intelligent, social mammals and the vital role they play in our changing ocean.

The Falkland Islands are a haven for wildlife enthusiasts. Sweeping coastlines and windswept grasslands provide vital habitat for vast colonies of penguins, albatrosses, and sea lions. Isolated yet teeming with life, the islands offer an up-close look at nature's ability to adapt and endure in the face of the elements.

### *What's the scenery like in the Falkland Islands?*

Every island in the Falklands has a story to tell. One moment you're walking along windswept white-sand beaches teeming with penguins; the next, you're crossing rolling moorlands or watching albatross nest in the tall inland grass. Steep cliffs rise above rocky coves, and the wild, open landscapes are as remote as they are spectacular.

Thanks to our small expedition boats, you'll have the chance to go ashore on guided nature landings – getting up close to the islands' raw beauty. This is nature, unfiltered.

## **South Georgia Island**

It's easy to see why South Georgia is called The Serengeti of the Southern Ocean. The sheer density of life here is overwhelming, creating a true wildlife experience of sights, sounds, and smells. Every cove seems to overflow with life, from dense kelp forests swaying beneath the surface to rocky cliffs packed with teeming seabird colonies. On the coastal plains, sprawling king penguin communities shuffle and squawk, while hulking elephant seals jostle for position.

Overhead, wandering albatrosses and skuas patrol the skies, and just offshore, humpback whales feast on krill. It's a true paradise for wildlife watchers, and the island's relatively mild climate and abundant vegetation allow for a richer variety of species than Antarctica.

South Georgia's beaches are ruled by king penguins. Thousands of breeding pairs gather in dense colonies, creating a sea of black and gold. Standing up to a metre tall, they're the second largest penguin species. On land, they move with a stiff, regal waddle, but in the water, they transform into agile hunters – reaching speeds of up to 10 mph and diving to depths of up to 300 metres in search of fish. Southern elephant seals, battle-scarred and weighing up to four tonnes, haul themselves onto the beaches of South Georgia with deep, guttural bellows. They're the largest seal species on Earth and can dive to a depth of 1,500 metres, staying under water for nearly two hours. Fur seals, smaller but feisty, dart between their much larger cousins, barking and snapping as they go. During breeding season, males fight for dominance, while mothers nurse their pups in the dunes. Millions of fur seals thrive on the island – a remarkable recovery from near-extinction.

The wandering albatross, South Georgia's most legendary seabird, reigns over the open ocean with the longest wingspan of any bird – reaching up to 3.5 metres. With a single effortless glide, it can cover hundreds of miles, riding the Antarctic winds for weeks without setting foot on land. They return to South Georgia's remote headlands to breed, where pairs reunite with intricate courtship dances. They raise a single chick every two years, a slow but necessary cycle for a species built for endurance.

### *What's the scenery like in South Georgia?*

South Georgia's scenery is a spectacle of contrasts, shaped by ice, wind, and waves. Towering mountains give way to sweeping glaciers, while the coastline is an ever-changing blend of black-sand beaches and green-tinged coastal plains. Fjords carve deep into the land and sheer sea cliffs rise sharply from the ocean. This is nature at its jaw-dropping, camera-filling best.

Thanks to our HX's small expedition boats, you can venture ashore on guided nature landings and experience the island's rugged beauty up close—whether trekking through tussock-covered hills or standing in awe before a colossal glacier.

No one is more synonymous with South Georgia than Sir Ernest Shackleton, whose final resting place we aim to visit in the abandoned whaling station of Grytviken. Through the onboard historians and destination specialists, you'll gain deeper insight into the island's storied past—tales of daring exploration, survival against the odds, and the rise and fall of the whaling industry.

## ONBOARD THE MS FLAM WITH HX EXPEDITIONS

Purpose-built as an expedition cruise ship, MS Fram is an exceptional base camp for explorers. On board, comfort is a top priority, so after a day of exploration you can relax in a hot tub, dine in your choice of two restaurants or at the outdoor BBQ and catch up with your fellow guests with a cocktail in hand as you watch the scenery glide past in the Explorer Lounge & Bar. In the Science Centre, at the heart of the ship, you'll discover more about the places you sail to and listen to talks by the Expedition Team.

With key expedition features and technology, MS Fram is primed to bring you on a journey of discovery to our planet's most alluring and unspoiled regions.

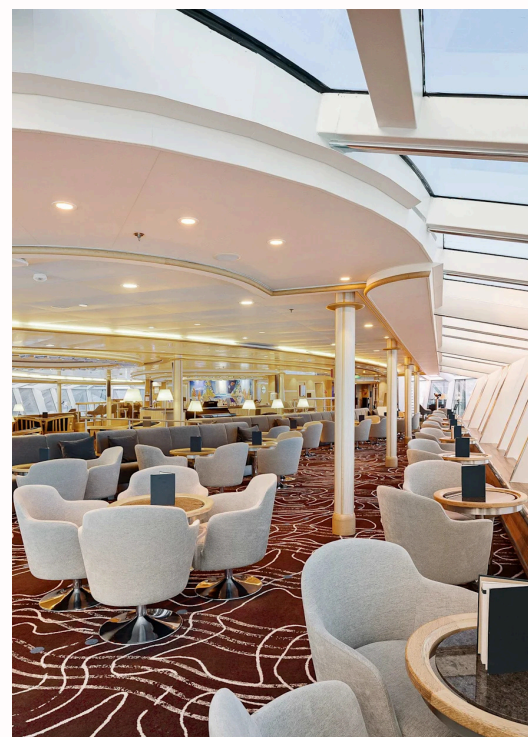
MS Fram's interiors are bright and airy with a Nordic vibe. With space for 200 guests, MS Fram was built for polar travel, carrying on the spirit of the legendary Norwegian exploration vessel that once drifted through Arctic ice under great explorer Fridtjof Nansen. Now, we're making the onboard experience even better.

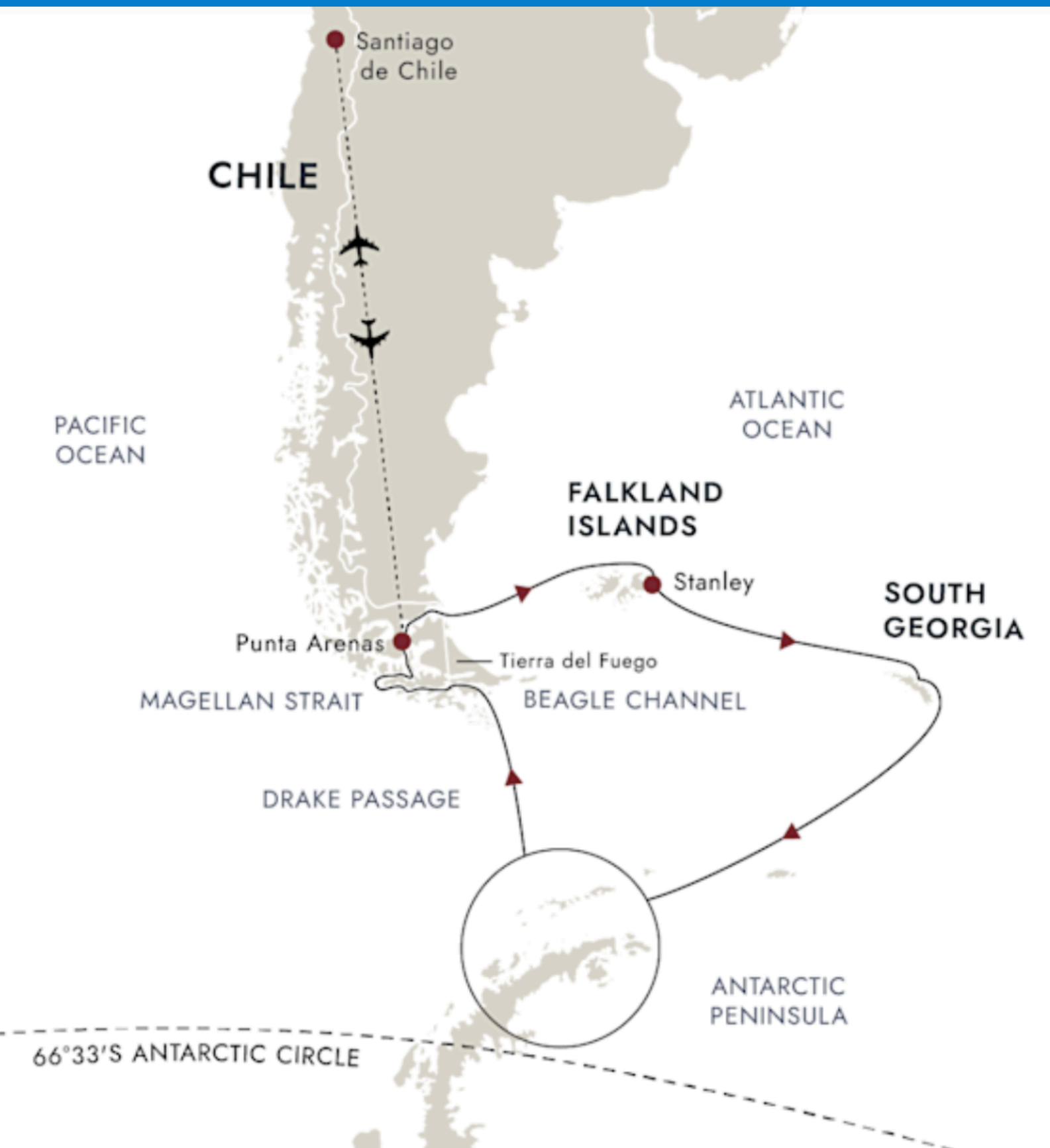
Onboard you will find the recently upgraded Science Centre. Delivering a more rounded and hands on experience. Unlock your inner scientist with these hands-on experiences helping you to get a better understanding of the world around where we sail. From researching the impact of climate change on animal populations and sea ice to getting a better understanding of migratory patterns of marine life. There are a range of projects to get involved with as we venture to many beautiful off-the-beaten-track locations. You will have the opportunity to support real-time research and help to collect valuable data that will contribute to the conservation and understanding of our planet.

### INCLUDED ON YOUR CRUISE

- Daily breakfast, lunch and dinner
- Wine, beer and spirits available at meals and throughout the day and evening (subject to licensing laws, excludes premium drinks)
- All day coffee, tea and soft drinks
- A complimentary Ocean Bottle water bottle to refill on board and take home
- A wind and waterproof expedition jacket
- Professional photos from your trip taken by our onboard photographer
- Complimentary Wi-Fi. Please note, streaming is not supported
- Use of sauna, hot tubs, fitness room, lounges and more
- Gratuities included. Fantastic service is standard at HX
- Range of included activities

\*\* Plus an Embark added bonus - one specialty dinner in Lindstrom restaurant





# THE ITINERARY

## 26<sup>th</sup> February 2028

Overnight in Santiago with an exclusive Embark Group Dinner

## 27<sup>th</sup> February 2028

Transfer and flight from Santiago to Punta Arenas to board MS Fram

## 28<sup>th</sup> February 2028 - At Sea

## 29<sup>th</sup> February 2028

New Island and West Point Island (Falkland Islands)

## 1<sup>st</sup> March 2028

Saunders Island and Carcass Island (Falkland Islands)

## 2<sup>nd</sup> March 2028

Port Stanley (Falkland Islands)

## 3<sup>rd</sup> March 2028 - At Sea

## 4<sup>th</sup> March 2028 - At Sea

## 5<sup>th</sup> March 2028

Cape Rosa (South Georgia and South Sandwich Islands)

## 6<sup>th</sup> March 2028

Prion Island (South Georgia and South Sandwich Islands)

## 7<sup>th</sup> March 2028

Godthul and Grytviken (South Georgia and South Sandwich Islands)

## 8<sup>th</sup> March 2028

Fortuna Bay and Stromness (South Georgia and South Sandwich Islands)

## 9<sup>th</sup> March 2028

St Andrews Bay (South Georgia and South Sandwich Islands)

## 10<sup>th</sup> March 2028 - At Sea

## 11<sup>th</sup> March 2028 - At Sea

## 12<sup>th</sup> March 2028

Antarctica Sound

## 13<sup>th</sup> March 2028

South Shetland (Antarctica)

## 14<sup>th</sup> March 2028

Gerlache Strait (Antarctica)

## 15<sup>th</sup> March 2028

South Shetland (Antarctica)

## 16<sup>th</sup> March 2028 - At Sea

## 17<sup>th</sup> March 2028

Puerto Williams (Chile)

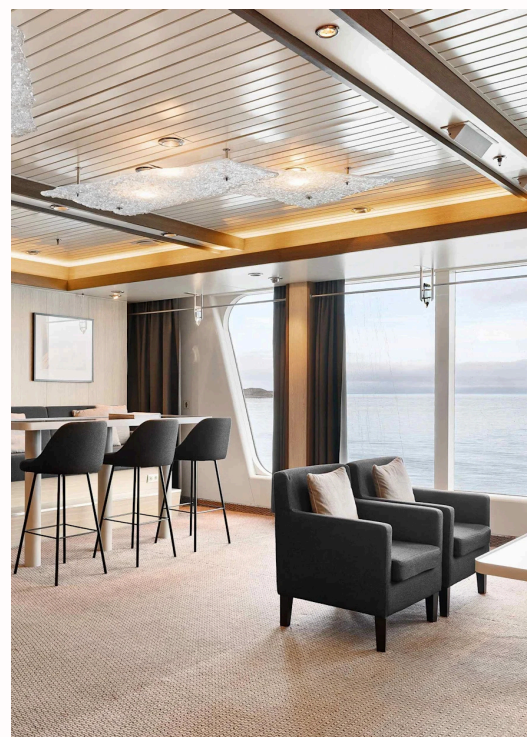
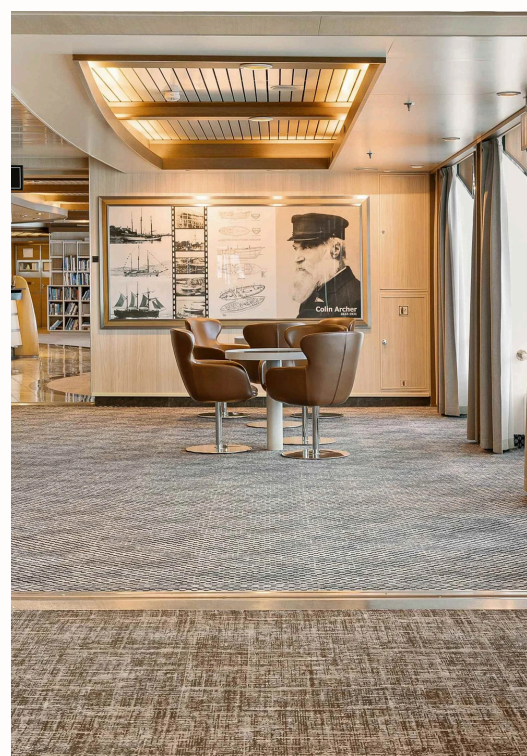
## 18<sup>th</sup> March 2028 - At Sea

## 19<sup>th</sup> March 2028

Punta Arenas

## 20<sup>th</sup> March 2028

Charter Flight to Santiago





## Your 2028 Small Group Embark Tour includes

- 22 night 'In-Depth Antarctica, Falklands and South Georgia Expedition' with HX Expeditions -
  - Hosted by owner Michelle Barker -
- Pre-Tour Get Together with your Travelling Companions in Newcastle -
  - Embark Beanie and Fleece -
- Bonus Group Dinner onboard at specialty restaurant, Lindstrom -
  - Group Dinner in Santiago on the 26<sup>th</sup> February -
- All onboard inclusions listed above with HX Expeditions -

### **PACKAGE COST**

By booking on the 26<sup>th</sup> February departure with Embark Travel, you will save over \$1500 per person compared to booking direct with HX. Plus, we have our bonus inclusions!

**POLAR OUTSIDE CABIN (Category N2) - \$30,080 per person twin share**

**ARCTIC SUPERIOR CABIN (Category U2) - \$31,627 per person twin share**

SUITE Pricing available on request

Solo Supplement is \$12,180 based on the Polar Outside Cabin (Category N2)

First deposit is \$2,000 per person

Second deposit of \$10,000 per person is due 31st May June 2027

Final payment due 31<sup>st</sup> October 2027

Not Included: International Airfares, Travel Insurance, Items not specified in itinerary. Airfares from Sydney will be offered 10months prior to departure. Please note that twin share option is only offered when you are booking with the person you are sharing with. If you are a solo traveller, the solo supplement must be paid. Please request full terms and conditions of our group tours for further details.



**ARE YOU READY  
TO JOIN US?**

TO SECURE YOUR SPOT TO THE  
SEVENTH CONTINENT, CALL  
0402335919

OR EMAIL [MICHELLE@EMBARK-TRAVEL.COM.AU](mailto:MICHELLE@EMBARK-TRAVEL.COM.AU)

PLACES ARE LIMITED

